

Dieterich Buxtehude

Domine Salvum fac Regem

BuxWV 18



Viola II

Nota bene

Dieterich Buxtehude

Viola II

Domine Salvum fac Regem

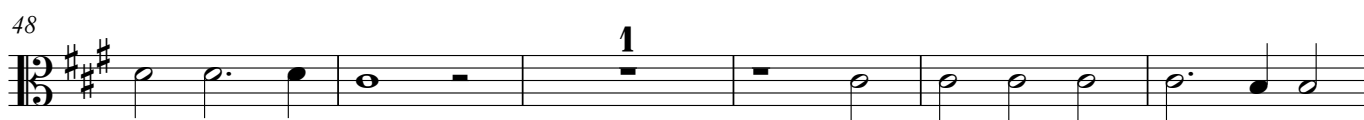
BuxWV 18

Sonata

Measures 1-26 of the Sonata. The key signature is three sharps (F#, C#, G#) and the time signature is 3/2. The score is written for Viola II. Measure 1 starts with a whole rest, followed by a half note G#4, a quarter note A4, and a half note B4. Measure 2 has a whole rest, a half note C5, a quarter note D5, and a half note E5. Measure 3 has a whole rest, a half note F#5, a quarter note G#5, and a half note A5. Measure 4 has a whole rest, a half note B5, a quarter note C6, and a half note D6. Measure 5 has a whole rest, a half note E6, a quarter note F#6, and a half note G#6. Measure 6 has a whole rest, a half note A6, a quarter note B6, and a half note C7. Measure 7 has a whole rest, a half note D7, a quarter note E7, and a half note F#7. Measure 8 has a whole rest, a half note G#7, a quarter note A7, and a half note B7. Measure 9 has a whole rest, a half note C8, a quarter note D8, and a half note E8. Measure 10 has a whole rest, a half note F#8, a quarter note G#8, and a half note A8. Measure 11 has a whole rest, a half note B8, a quarter note C9, and a half note D9. Measure 12 has a whole rest, a half note E9, a quarter note F#9, and a half note G#9. Measure 13 has a whole rest, a half note A9, a quarter note B9, and a half note C10. Measure 14 has a whole rest, a half note D10, a quarter note E10, and a half note F#10. Measure 15 has a whole rest, a half note G#10, a quarter note A10, and a half note B10. Measure 16 has a whole rest, a half note C11, a quarter note D11, and a half note E11. Measure 17 has a whole rest, a half note F#11, a quarter note G#11, and a half note A11. Measure 18 has a whole rest, a half note B11, a quarter note C12, and a half note D12. Measure 19 has a whole rest, a half note E12, a quarter note F#12, and a half note G#12. Measure 20 has a whole rest, a half note A12, a quarter note B12, and a half note C13. Measure 21 has a whole rest, a half note D13, a quarter note E13, and a half note F#13. Measure 22 has a whole rest, a half note G#13, a quarter note A13, and a half note B13. Measure 23 has a whole rest, a half note C14, a quarter note D14, and a half note E14. Measure 24 has a whole rest, a half note F#14, a quarter note G#14, and a half note A14. Measure 25 has a whole rest, a half note B14, a quarter note C15, and a half note D15. Measure 26 has a whole rest, a half note E15, a quarter note F#15, and a half note G#15. Dynamics include *p* (piano) at measure 3 and *f* (forte) at measure 10.

Tutti - Domine salvum

Measures 1-21 of the Tutti - Domine salvum section. The key signature is three sharps (F#, C#, G#) and the time signature is 3/2. The score is written for Viola II. Measure 1 starts with a whole rest, followed by a half note G#4, a quarter note A4, and a half note B4. Measure 2 has a whole rest, a half note C5, a quarter note D5, and a half note E5. Measure 3 has a whole rest, a half note F#5, a quarter note G#5, and a half note A5. Measure 4 has a whole rest, a half note B5, a quarter note C6, and a half note D6. Measure 5 has a whole rest, a half note E6, a quarter note F#6, and a half note G#6. Measure 6 has a whole rest, a half note A6, a quarter note B6, and a half note C7. Measure 7 has a whole rest, a half note D7, a quarter note E7, and a half note F#7. Measure 8 has a whole rest, a half note G#7, a quarter note A7, and a half note B7. Measure 9 has a whole rest, a half note C8, a quarter note D8, and a half note E8. Measure 10 has a whole rest, a half note F#8, a quarter note G#8, and a half note A8. Measure 11 has a whole rest, a half note B8, a quarter note C9, and a half note D9. Measure 12 has a whole rest, a half note E9, a quarter note F#9, and a half note G#9. Measure 13 has a whole rest, a half note A9, a quarter note B9, and a half note C10. Measure 14 has a whole rest, a half note D10, a quarter note E10, and a half note F#10. Measure 15 has a whole rest, a half note G#10, a quarter note A10, and a half note B10. Measure 16 has a whole rest, a half note C11, a quarter note D11, and a half note E11. Measure 17 has a whole rest, a half note F#11, a quarter note G#11, and a half note A11. Measure 18 has a whole rest, a half note B11, a quarter note C12, and a half note D12. Measure 19 has a whole rest, a half note E12, a quarter note F#12, and a half note G#12. Measure 20 has a whole rest, a half note A12, a quarter note B12, and a half note C13. Measure 21 has a whole rest, a half note D13, a quarter note E13, and a half note F#13. Dynamics include *f* (forte) at measure 10.



Sonata repetatur

91 *Gloria Patri*
Adagio

